



HUTCHINSON®

We make it **possible**

Banjo Sealing Washers

Hydraulic fittings

In-house Manufacturing, Safe Sealing

Banjo Seals have been developed primarily for the automotive and trucks sector for systems using connectors in the transfer of fluids. They offer significant advantages over metal-only copper or aluminium washers. The elasticity of the rubber ensures a highly reliable tightness and the self-centring lip allows an easy assembly.

- › Design and dimensions based on standards:
 - DIN 7642: hose nipple
 - DIN 7643: hollow screws



Banjo connector



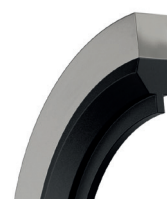
Banjo fitting

APPLICATIONS / MARKETS

- › Hydraulic fittings
- › Turbo connections
- › Banjo fuel lines
- › Oil tank drain plug
- › Oil return to pump
- › Trucks
- › Off-road
- › Automotive

BENEFITS

- › Standard fitting dimensions according to DIN 7642 and 7643
- › Easy assembly thanks to self-centring
- › Improved sealing capability thanks to the rubber lip
- › Long life span sealing solution
- › Suitable with limited requirement for sealing surface roughness



TECHNICAL DETAILS

- › Standard size range from M22 to M32
- › Wide range of rubber compounds to suit all applications and fluids standard FKM compounds : DF851 -7DF2067; other possible compounds in AEM (7DE2138) and HNBR (8DT1706)...
- › Standard steel : Mild steel DC01
- › Temperature range from -60°C to +250°C

Family	Compound	Color	Hardness (Sh.A)	Min T°C	Max continuous T°C	Max peak T°C	Compression Set %	Compression Set conditions
FKM	DF851	Black	84	-25	200	250	20	72h at 200°C
FKM	7DF2067	Green	72	-25	200	250	20	72h at 200°C

Metal	Tensile strength (MPa mini)	Specification
Mild steel DC01	540	EN 10139

Surface treatment	Corrosion resistance	Specification
Plating Zinc Nickel P18	Red dust 600 hours	ISO 9227